



Ministerie van Binnenlandse Zaken en
Koninkrijksrelaties

Implementation of limit values in the Netherlands

Jos Verlinden
Senior Policy Advisor
Circular Building
Ministry of the Interior and
Kingdom Affairs



Content

1. General introduction
2. Public side of the system
3. Private side of the system
4. Topics in discussion





General introduction: public-private system

1. Public

- political decisions
- building regulation

2. Private

- technical decisions
- assessment method





General introduction: integrated environmental impact

- Weigthed one-point score environmental impact construction works
- In accordance with EN 15804: LCA
- Embodied carbon integrated in the one-point score

Impact category	Unit	Weighting of results	
Climate change – total	kg CO2-eq.		Single-score indicator
Climate change – fossil	kg CO2-eq.		
Climate change – biogenic	kg CO2-eq.		
Climate change – land use and change to land use	kg CO2-eq.		
Ozone layer depletion	kg CFC11-eq.		
Acidification	mol H+-eq.		
Freshwater eutrophication	kg PO4-eq.		
Seawater eutrophication	kg N-eq.		
Land eutrophication	mol N-eq.		
Photochemical ozone formation	kg NMVOC-eq.		
Depletion of abiotic raw materials, minerals, and metals	kg Sb-eq.		
Depletion of abiotic raw materials	MJ, net cal. val.		
Fossil fuels			
Water use	m3 world eq.		
Fine particulate emissions	Illness incidence		
Ionizing radiation	kBq U235-eq.		
Ecotoxicity (freshwater)	CTUe		
Human toxicity, carcinogenic	CTUh		
Human toxicity, non-carcinogenic	CTUh		
Land-use related impact/soil quality	Dimensionless		



Building regulation

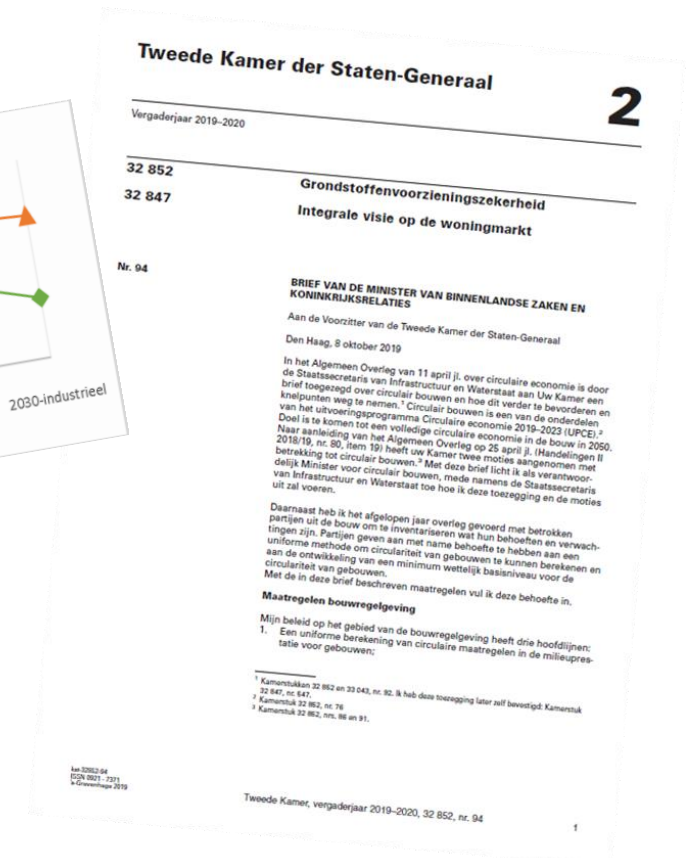
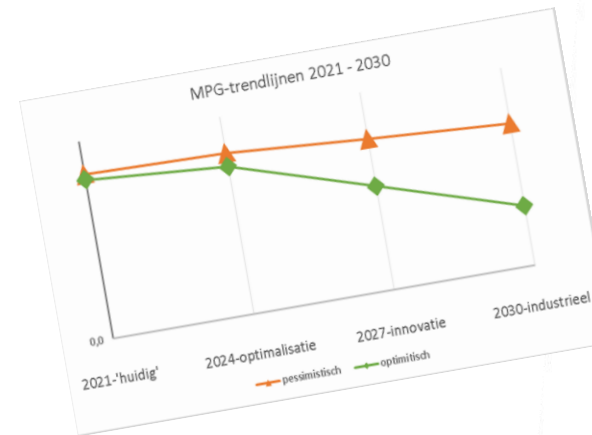
- Policy since 2006
- Proscribed assesment method since 2013
- Environmental performance new houses and office buildings since 2018
- Environmental performance new houses more stringent 2021





Policy until 2030

1. Uniform assessment method for circular measures
2. Performance requirement more stringent step by step to be halved ultimately in 2030
3. Performance requirement for more user functions: education, health, commercial,
And for renovation





Independent private management

- Independent Foundation NMD
- Management of assessment method and database
- Validation of calculation tools and EPD's
- Advisory committees: parties concerned and technical experts

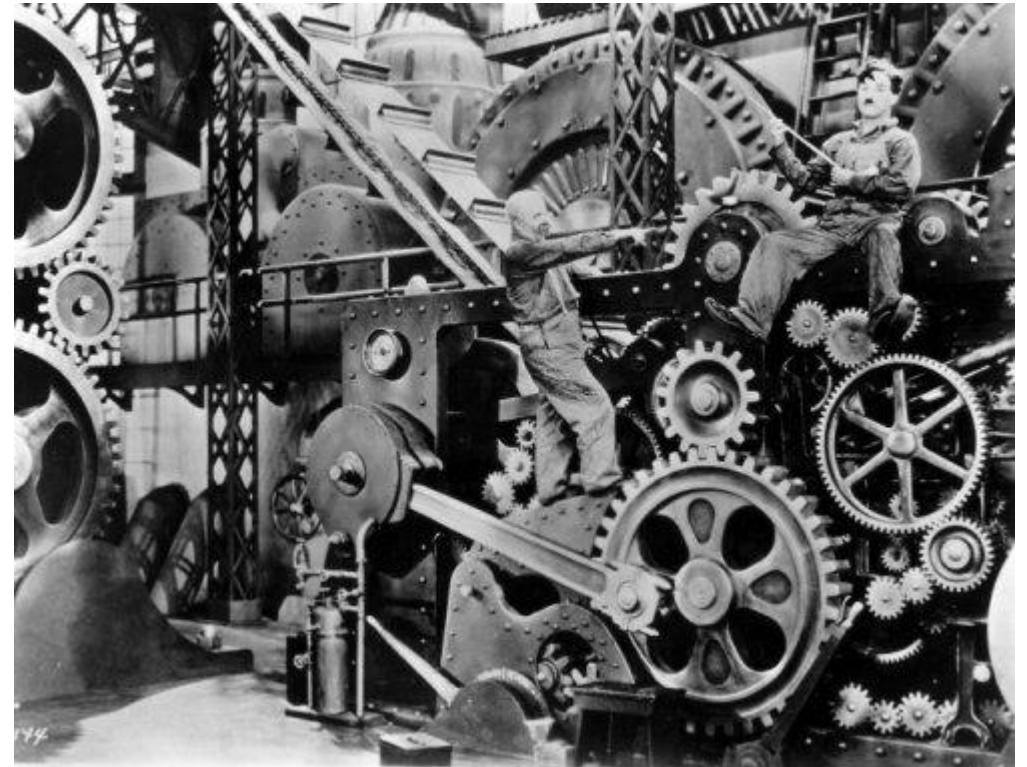


www.milieudatabase.nl



Cooperation government – foundation NMD

- Consistency policy goals and development assessment method
- Financial support





Topics in discussion: circular policy and CO2

- Integrated environmental impact v CO2/decarbonization
- Integrated CO2-impact v energy - materials
- Value of biogenic carbon in environmental impact
- Design criteria versus environmental impact
- Validating end-of-life calculations





Thank you for your attention

Ir J. Verlinden

Housing and Energy

.....
Ministry of the Interior and Kingdom Relations
Directorate-General Governance, Spatial Planning and Housing
Turfmarkt 147 | 2511 DP | The Hague
PO Box 20011 | 2500 EA | The Hague
Secretariat: 0031 70 426 7191/7122

.....
M 00 31 652 595 640

jos.verlinden@minbzk.nl

www.rijksoverheid.nl

Thank you for listening

Questions??





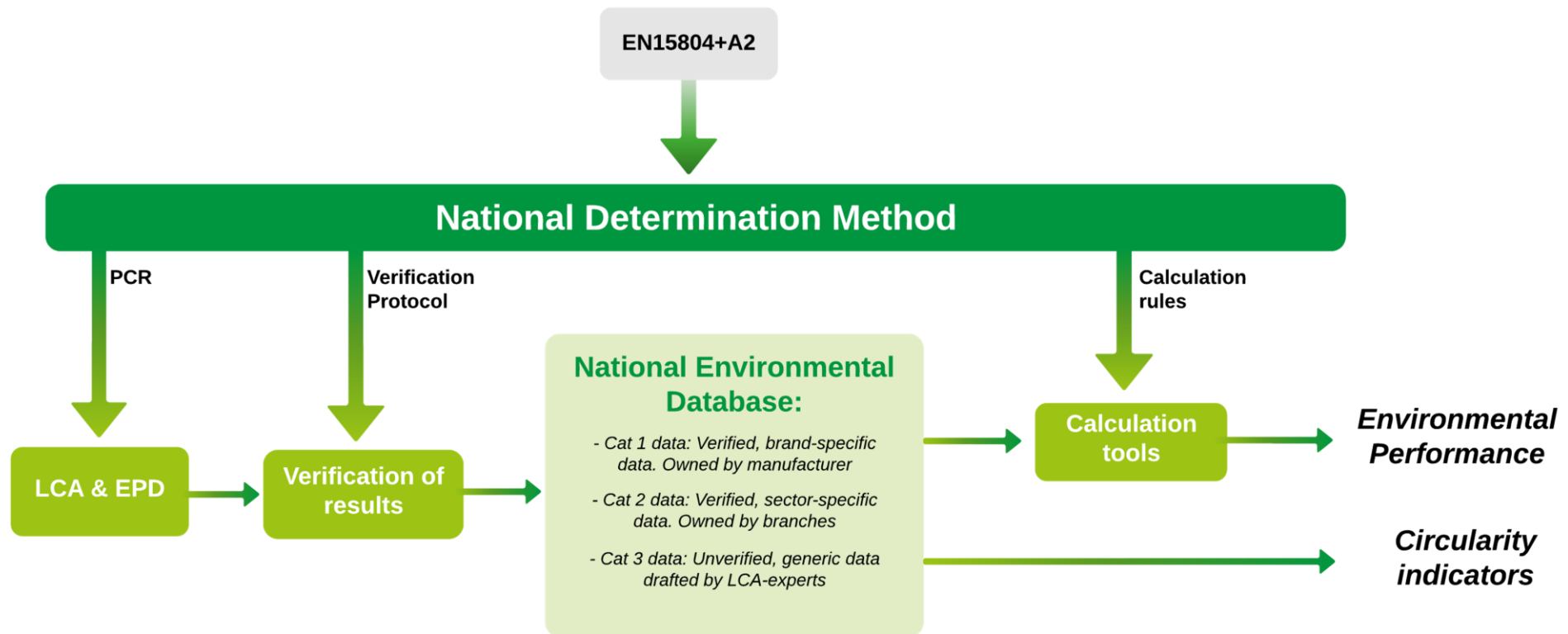
Appendix: assessment method

- 2 slides with basic information and links for more info





National assessment method (1)





National assessment method (2)

Impact category	Unit	Weighting of results
Climate change – total	kg CO2-eq.	Single-score indicator
Climate change – fossil	kg CO2-eq.	
Climate change – biogenic	kg CO2-eq.	
Climate change – land use and change to land use	kg CO2-eq.	
Ozone layer depletion	kg CFC11-eq.	
Acidification	mol H+-eq.	
Freshwater eutrophication	kg PO4-eq.	
Seawater eutrophication	kg N-eq.	
Land eutrophication	mol N-eq.	
Photochemical ozone formation	kg NMVOC-eq.	
Depletion of abiotic raw materials, minerals, and metals	kg Sb-eq.	
Depletion of abiotic raw materials	MJ, net cal. val.	
Fossil fuels		
Water use	m3 world eq.	
Fine particulate emissions	Illness incidence	
Ionizing radiation	kBq U235-eq.	
Ecotoxicity (freshwater)	CTUe	
Human toxicity, carcinogenic	CTUh	
Human toxicity, non-carcinogenic	CTUh	
Land-use related impact/soil quality	Dimensionless	

www.milieudatabase.nl



www.linkedin.com/company/nationale-milieudatabase